

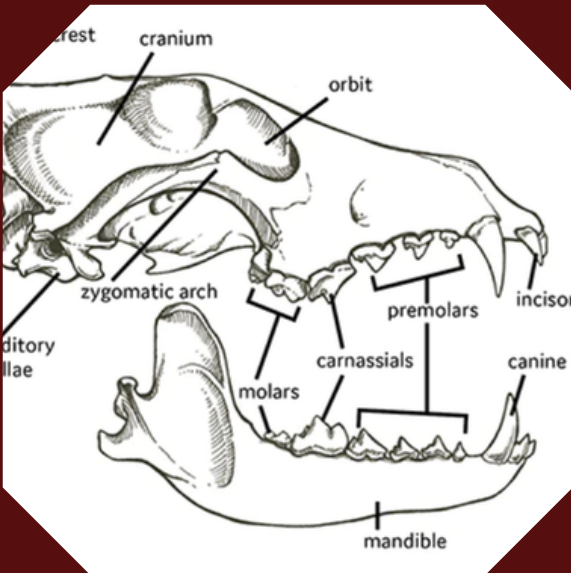
What's What

At the Bison Range



MUSEUM TOUR

Enjoy a guided tour of our museum where you will learn about the long history of the local Selis, Qlispe, and Ksanka tribes and how their connection to bison helped shape the Bison Range as we know it today.



ANIMAL ACTIVITY

Kids can explore real pelts, skulls, antlers, and horns to learn more about our local animals and how they adapt to their environment.



PRAIRIE WALK

A guided walk along our prairie walking trail, while learning about Montana's grassland ecosystems, the history of tribal fire management, habitat conservation, and traditional ecological knowledge.

MAKER TRUCK

Kids can enjoy checking out our 3D printer and laser etcher to learn more about the latest technology while they participate in traditional art activities such as beading, drum making, basket making, and more!

POND WALK

Walking along our pond, kids will learn about pond ecosystems and our local species. Older kids can also take part in an insect identification activity by scooping pond water and checking out the many different invertebrates that live there.

NATIVE GAMES

Native games are a great way for kids to learn about traditional activities for the Selis, Olispe, and Ksanak tribes while also stretching their legs. Games include double ball and run-and-scream.



We Have Something for Everyone!

MAKER TRUCK



The name of the Maker Truck comes from the Salish and Kootenai words for "to make". With support and input from both culture committees, the Kwul (Salish) 'Itkin (Kootenai).



In August of 2016, spectrUM and the Confederated Salish and Kootenai Tribes were awarded an NSF EAGER award to inspire the Flathead Indian Reservation's next-generation workforce through mobile, cultural making.



The activities in the Maker Truck curriculum support Indian Education for All, and aims to teach students about the diversity of local tribes and the importance of their traditions.



The SciNation team met with both the Salish Pend d'Orielle and Kootenai Culture Committees to determine appropriate activities to develop for use with the Kwul 'Itkin Maker Truck.



The Maker Truck offers students an opportunity to check out new technology while also learning traditional crafts such as beading, drums, and cedar baskets.

